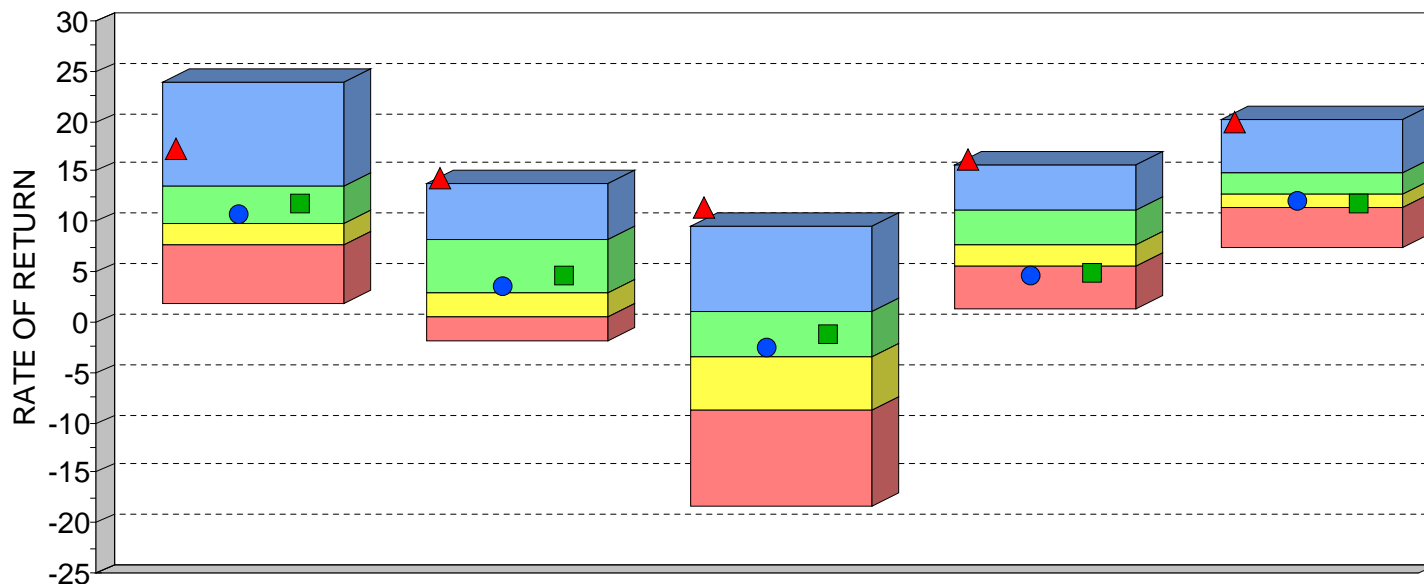




**LATEEF MANAGEMENT ASSOCIATES
 QUARTILE RANKING BAR
 PSN ALL CAP GROWTH UNIVERSE
 DECEMBER 31, 1994 TO DECEMBER 31, 2004**



	12/2003-12/2004	12/2001-12/2004	12/1999-12/2004	12/1997-12/2004	12/1994-12/2004
HIGH (0.05)	23.80	13.87	9.59	15.75	20.26
FIRST QUARTILE	13.54	8.30	1.16	11.10	14.74
MEDIAN	9.74	2.99	-3.43	7.64	12.74
THIRD QUARTILE	7.65	0.50	-8.83	5.56	11.46
LOW (0.95)	1.73	-1.96	-18.42	1.41	7.55
MEAN	10.63	4.03	-3.86	8.24	13.30
VALID COUNT	54	53	48	38	31

	12/2003-12/2004		12/2001-12/2004		12/1999-12/2004		12/1997-12/2004		12/1994-12/2004	
	VALUE	RANK	VALUE	RANK	VALUE	RANK	VALUE	RANK	VALUE	RANK
▲ LATEEF MGMT NONTAX ALLCAP GR	17.24	11	14.31	1	11.36	1	16.27	1	19.96	1
● STANDARD & POOR'S 500	10.87	40	3.58	47	-2.30	41	4.77	84	12.07	61
■ RUSSELL 3000	11.95	35	4.80	39	-1.17	27	5.09	81	12.01	61



DISCLOSURE

GENERAL DISCLOSURE

- a) Lateef Investment Management (Lateef) is an independent investment advisory firm established in 1974. Lateef is registered with the Securities and Exchange Commission under the Investment Advisors Act of 1940. Lateef is headquartered in Greenbrae, California and maintains an office in Portland, Oregon.
- b) Past performance is not indicative of future results. The actual return and value of an account will fluctuate and at any point in time could be worth more or less than the amount initially invested.
- c) The average market capitalization of portfolios in the composite may differ from the weighted average market capitalization of the index.
- d) The volatility of the index may be greater or less than the volatility of the portfolios in the composite.
- e) Results presented are time-weighted total rates of return expressed in U.S. Dollars. Performance results reflect all income, gains and losses and the reinvestment of interest and other income. All rates of return are reported "NET" of fees. Additional information regarding the policies for calculating and reporting returns is available upon request.
- f) A complete listing and description of all Lateef composites and performance results is available upon request.